

Upgrade tools:

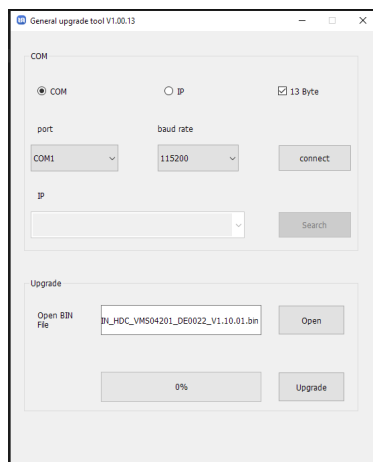
- Windows Computer
- PC app "GENERAL_UPGRADE_Vxx.xx.xx.exe",
- Micro USB cable.

Files:

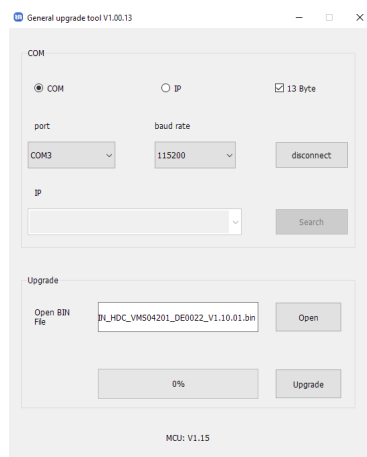
- GENERAL_UPGRADE_Vxx.xx.xx.exe: PC App.
- MCU_MAIN_xxxx_xxxx.bin: FW file



1. Power on the HDMI Matrix Switch, then connect it to a Windows Computer with a Micro USB cable. (make sure it is a data cable, not for charging only)
2. Open PC upgrade tool "GENERAL_UPGRADE_Vxx.xx.xx.exe", select new / correct **COM port** and band rate: "**115200**".

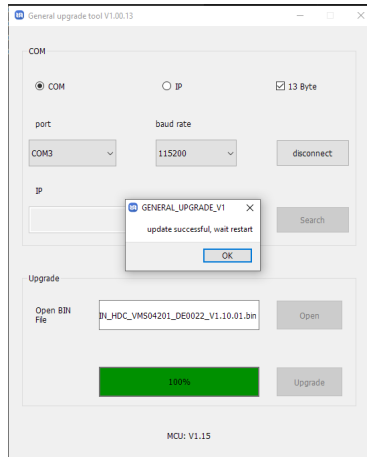


3. Select **13 Byte** mode then click **connect**. You will see the current firmware version as follows:



4. **Select** new firmware, eg. MCU_MAIN_xxxx_xxxx.bin, then click **upgrade**.

5. Upgrade done, wait until success message disappear.



6. Power off the Switch, then power on again. You will see the new firmware version in the bottom line.