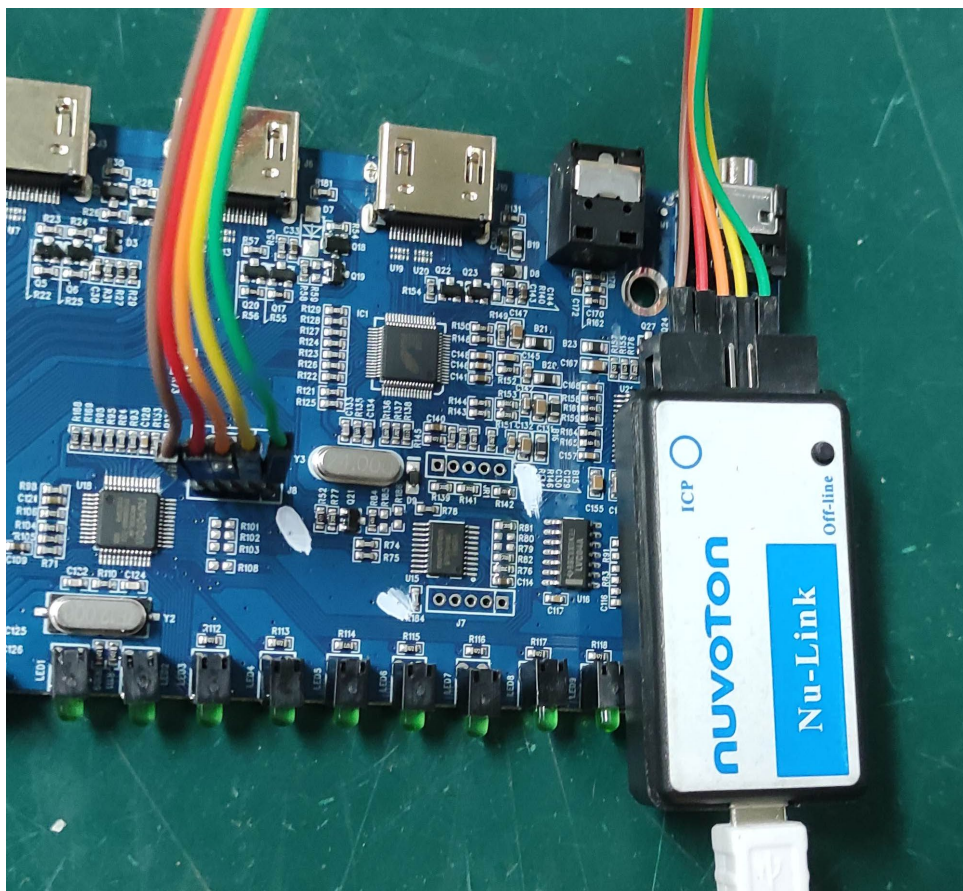
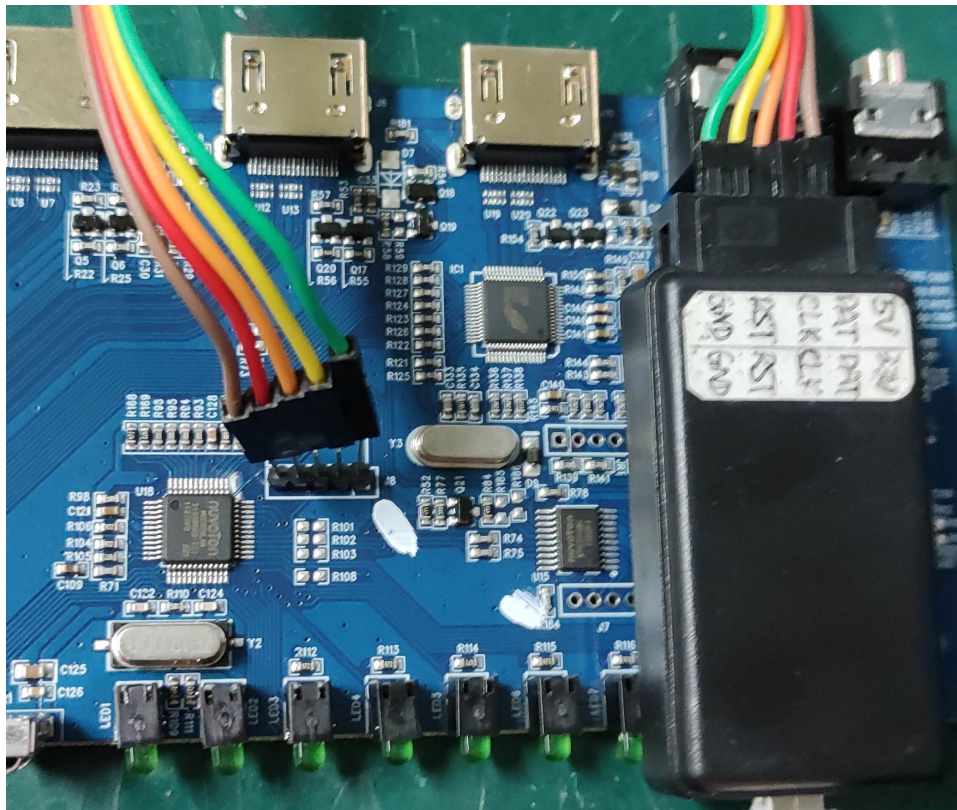


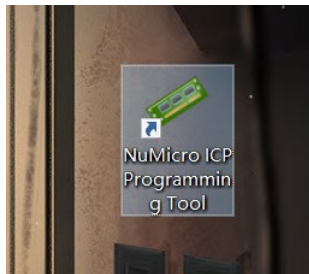
0.How to connect chip with a Nu-Link.



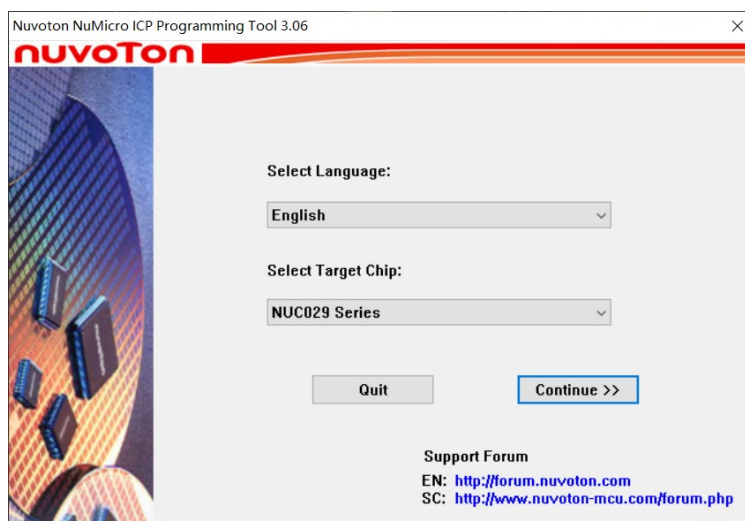
1. Install NuMicro ICP Programming Tool 3.06.7215r.exe
2. Install Nu-Link USB Driver 1.8



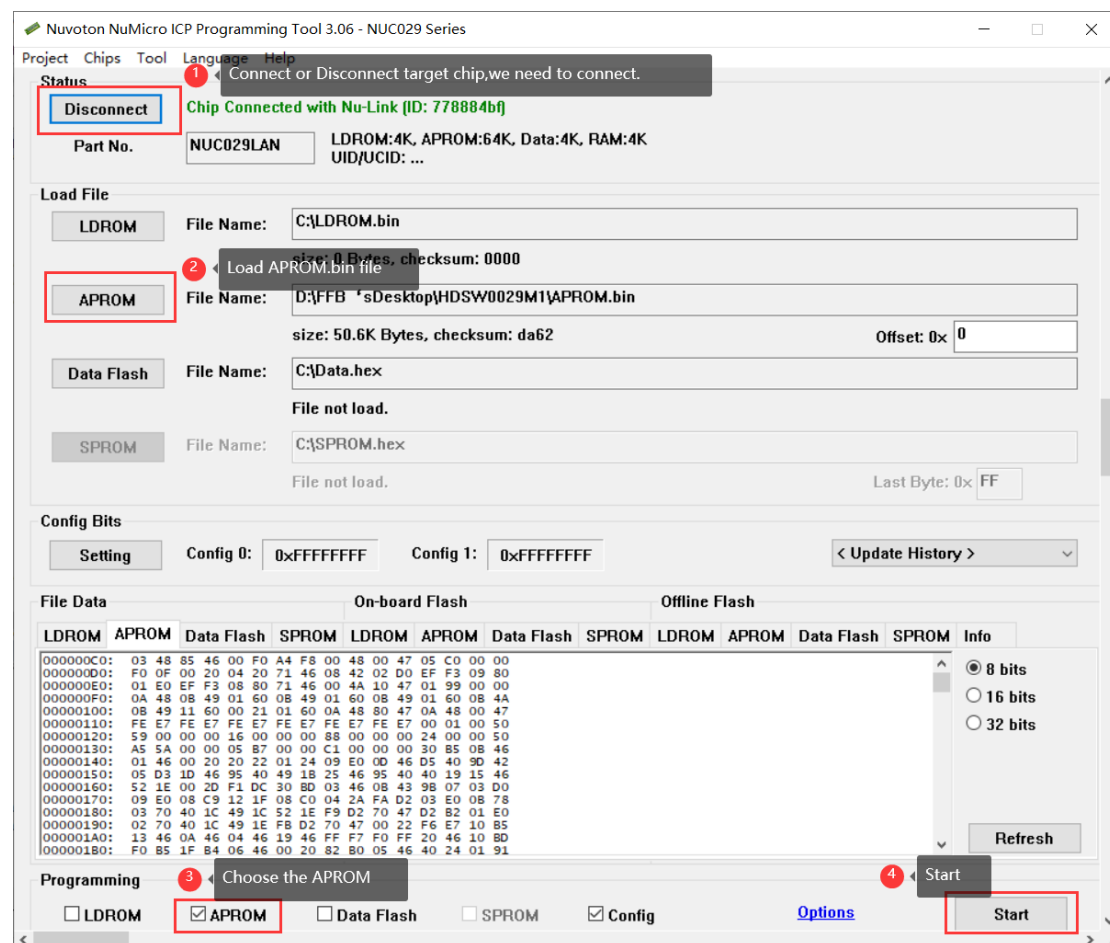
3. Launch NuMicro ICP Programming Tool



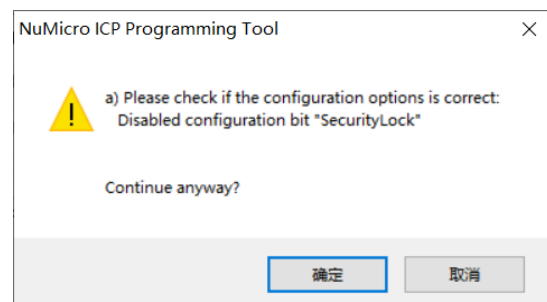
4. Choose M029 Series



5.Connect and load file.



6.Do not need lock,choose Y.



7.If you want to do again auto,choose Y

